

**NO BARRIERS WHEN IT  
COMES TO EDUCATION!**



# “YOUTH BELONG”

Erasmus KA1 - Youth Workers Mobility

## INFO PACK



# WHERE TO?



Chania, Crete,  
Greece



27 May - 3 June 2024



# Project Overview

## of the Youth Exchange

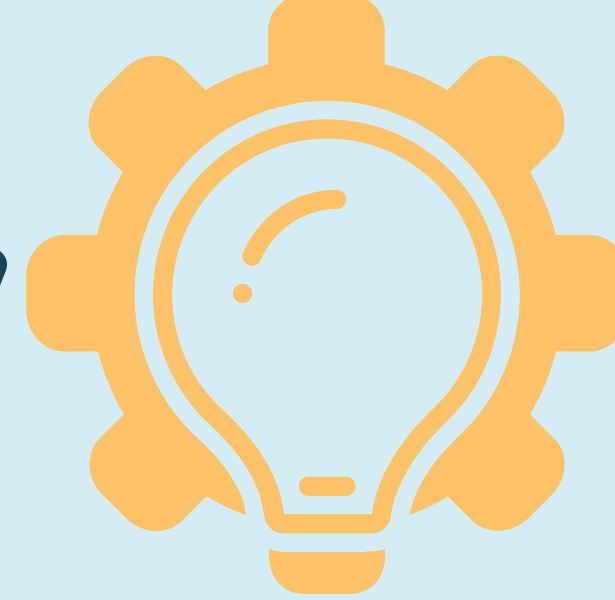
- 44 youth workers
- 5 EU Member States (GR, RO, RL, LT, IT)
- Our goal is to:
  - 1) analyze the issue of exclusion for marginalized youth.
  - 2) explore the reasons behind it and the circumstances that contribute to the continuation of this phenomenon in our modern European society
  - 3) empower youth workers with knowledge and skills for such cases
- The project gives a chance for a deeper understanding of the definition of marginalized young people and shows ways that exclusion may be manifested
- Discovering ways to provide aid such young people into being included and best practices for youth work



Erasmus+



# METHODOLOGY



This Youth Workers Mobility will include activities based on the pillars of non-formal learning aiming to develop the understanding, knowledge, skills and attitudes of the participating youth workers on the topic of inclusion in our modern society in an interactive way.

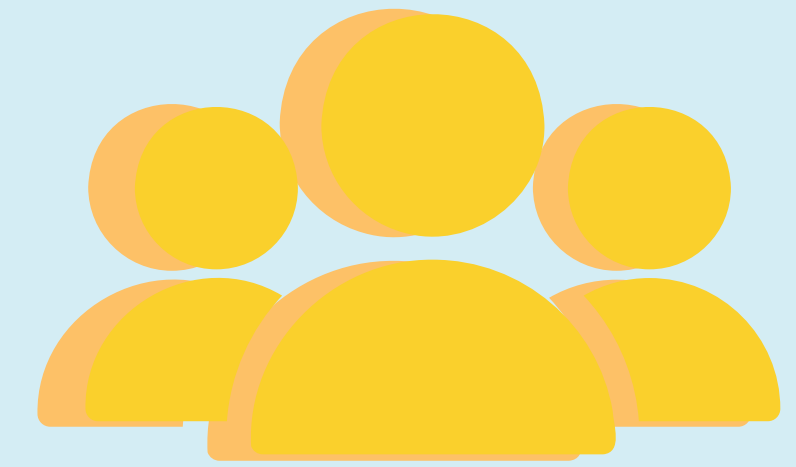
Non-formal learning activities  
Interactive activities: ice-breaking games, team-building activities, non-formal workshops, reflection sessions  
Role-playing games, physical exercise sessions, case studies, and study visits



Erasmus+



# ABOUT THE PARTICIPANTS



Target group: youth workers working with marginalized groups of young people that will have to meet the following criteria:

- aged between **21-40 years old**
- owners of the **European Health Card**
- willing to contribute to **learning more about the inclusion of marginalized young people** in working groups as well as the society
- Able to **communicate in English** for the needs of the activities
- Motivated to **fully engage to the project** throughout the days
- Motivated to work in **multicultural, creative environment**
- Participants with **fewer opportunities** based on "Geographical barriers, Social barriers, Cultural differences" (according to the latest version of the ERASMUS+ Guide)



# RESULTS & IMPACT

This project wishes to:

1) Inform youth workers about policies, initiatives and strategies regarding inclusion at national and european level.

2) Empower youth workers by developing their skills, competences and knowledge background when it comes to inclusion of youth and marginalized groups.

3) Raise awareness about the issues of discrimination and racism among youth by developing a campaign for "Inclusive Societies"

**WITH THAT BEING SAID,**

Youth workers will get the opportunity to explore and work on the various situations and issues that may cause problems to the inclusion and integration process of various marginalized young people

# COMMUNICATION DISSEMINATION

## AHEAD OF THE EXCHANGE

Joining private groups on Facebook and WhatsApp will be mandatory to break the ice.

## AFTER THE EXCHANGE

We want to keep in touch with you! We upload your testimonies of the Exchange posted on each partner's website.

As the Ambassadors of the project, you will use your social channels to communicate the project during the project days as well as to promote the outputs that they will create afterwards.



# TASKS

## BEFORE

Participation in the preparatory meeting is mandatory to break the ice and get to know each other. Do not forget to join the communications channels!

## DURING

Your presence matters! As is your active figure and sharing your opinion. Contribute by organizing and leading activities in national groups

Join the Google Drive and add all the material you have developed (audio, visual, dissemination), as well as travel documents. Posts on social media and sharing the word about ERASMUS+

## AFTER

Most importantly: Participate in the follow-up meeting of the project to reflect and discuss the thematic



# ABOUT US

"Change Your Life Now"- CYLN  
is the coordinator of the Project.

You may find more information on our website

For any further information do not hesitate to contact  
us via e-mail: [info@gefyradiamesolavisi.com](mailto:info@gefyradiamesolavisi.com)



# PRACTICAL ARRANGEMENTS

## About Chania

Chania: ( Greek: Χανιά, [xaˈɲa] ) is the second largest city of Crete and the capital of the Chania regional unit and it lies along the north coast of the island. The city has an airport and the port of Souda, the largest natural port of the Mediterranean.

The Venetian port provides pleasant promenades through picturesque streets and attracts many visitors throughout the year. This districts of the city outside the walls still preserve their Venetian nobility. Narrow passages surrounded by elegant houses built in different historical periods offer visitors pleasant routes to discover.

# ACCOMODATION



The participants will be accommodated in the "Camping Chania", in fully equipped bungalows that host 4 participants. The activities will be held there as well.



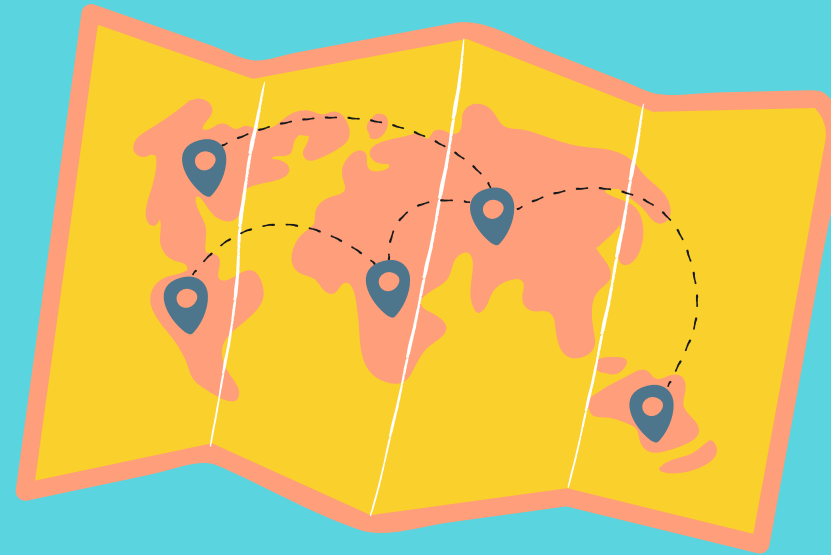
Camping Chania is situated in a local beauty spot known as Ag. Apostoli. There are four small sandy beaches all within walking distance, the closest one being 100m away and the most far 300m away from the camping.

You may find out more details about the camping in its [website](#)

# TRAVELLING

## TRAVEL DAYS

The participants need to arrive at Chania on Monday 27 May 2024 and depart on Monday 3 June 2024.



## TRAINING

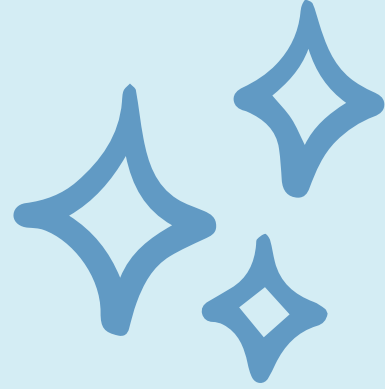
The activities of the Project will be held from Tuesday 28 May to Sunday 2 June 2024.

## ITINERARY

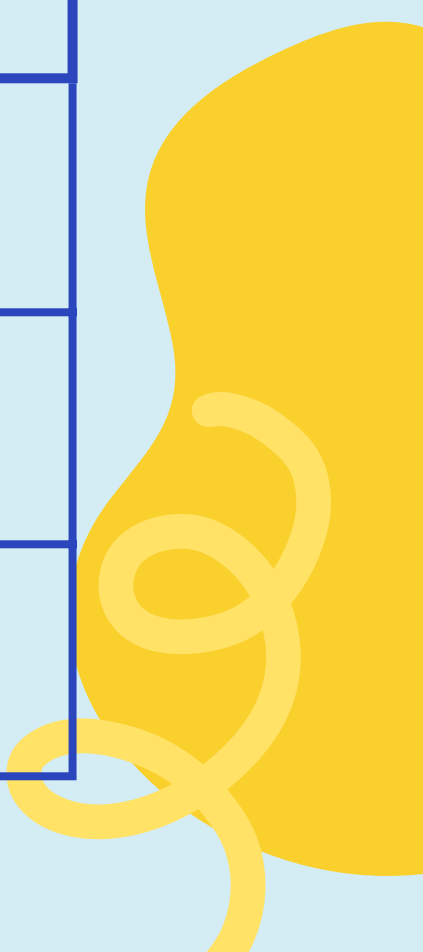
The ticket costs will be refunded to the participant as soon as you arrive at your country and send us all the boarding passes.  
If the ticket cost exceeds the maximum travel budget (see above) the participant should cover the difference.

Check the next slide for some important information!

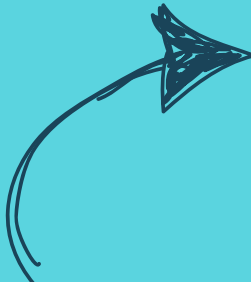
# BUDGET PER TEAM



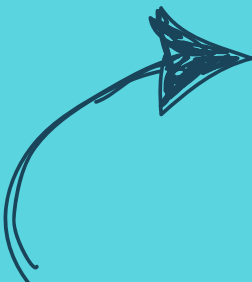
COUNTRY	BUDGET (PER PARTICIPANT)
GREECE (GREEN TRAVEL)	210 EUROS
POLAND	275 EUROS
ITALY	275 EUROS
ROMANIA	275 EUROS
LITHUANIA	360 EUROS



# ATTENTION!



Original Tickets & Invoices where the price is shown as well as the Boarding Passes are required for the Refund



The reimbursement procedure is followed on the basis of original documents that will be requested to the participants, according to the financial regulations of Erasmus+ programme



Invoices should be in EUR and your names should be written on the invoices.



# ...TO THE CAMPING

If you arrive at Chania airport,

you take the KTEL bus outside of the airport to the city centre of Chania. The ticket costs 2,30 EUR.

On the final stop, you walk to find the "1866 Square" and from there you have to take the bus 21 and ask the driver to get off at the camping Chania

If you arrive at at Heraklion airport,

you need to take a 2,5-3 hour bus to Chania city centre. The ticket costs 13,80 EUR.

On the final stop, you walk to find the "1866 Square" and from there you have to take the bus 21 and ask the driver to get off at the camping Chania

P.S.: For any question you may have you may ask the bus drivers, other passengers or people who work at the airport in order to help you out.

# NUTRITION

As far as your nutrition is concerned, it is 100% covered by the Programme. Breakfast, lunch and dinner will be served in the camping.

In Greece you do as Greeks do, so exceptionally traditional Greek food is on the menu

The participants that have any specific nutrition needs (e.g. allergies, intolerance) need to notify their leader in order to make the necessary arrangements

# INSURANCE

All participants that are from the sending organizations EU Member-States are obligated to have their **European Health Card**.

They must provide it to their sending organization upon their selection. If they fail to do so they will not be eligible for participation.

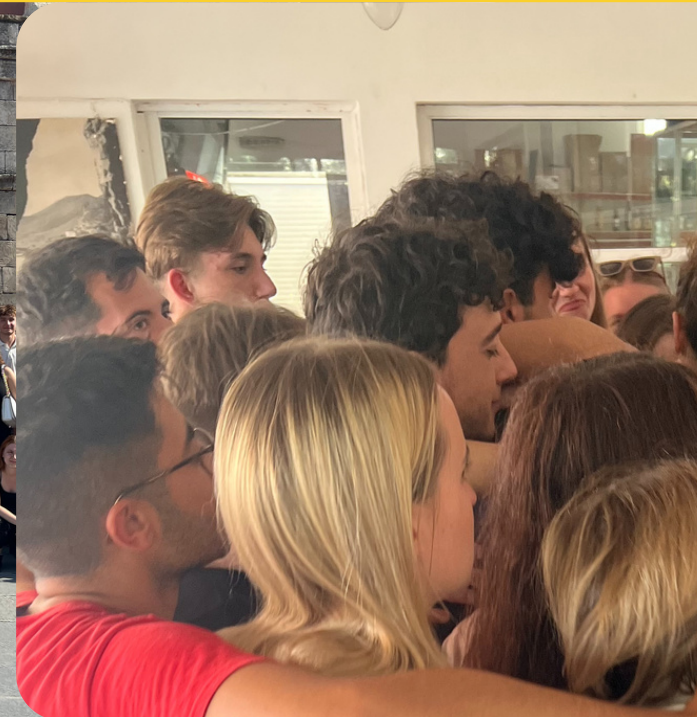


# INTERCULTURAL EVENTS



A special evening will be dedicated in presenting each participating country to the other participants.

Please prepare a short presentation about your country focused on culture and bring along traditional music, food or anything else you would like to show and share with the other participants. Each delegation will have 30 minutes in total.





# WEATHER & USEFUL CONTACTS

The average temperature, during the days of the Project in Crete, it will be between 14oC and 23oC degrees, while the weather is also quite changing from sunny days to lots of rain. You can check the weather forecast before your arrival.

Do not forget to take work jackets for the evenings as well as your swimming suit as a marvelous beach will be waiting for us if the weather allows us to visit!

National Emergency Number: 100  
National Hospital Number: 166  
European Emergency Number: 112



Erasmus+



# Looking forward to welcoming you all to YOUTH BELONG

